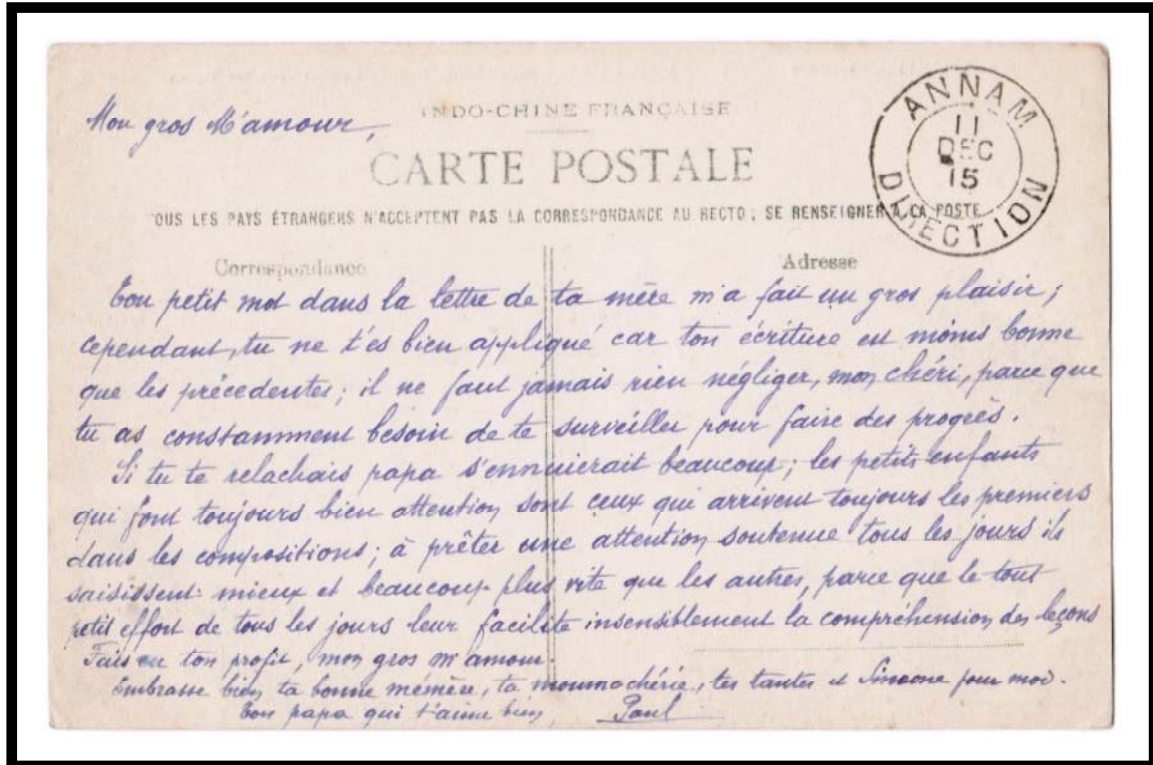


ANNAM DIRECTION

The French word “direction” can mean management, directorate or headquarters. “Direction” appears in some Indochinese postmarks, but usually in combination with a major city. This example may have been applied as a favor cancel or the postcard may have been mailed in an envelope with a circular cutout allowing the postmark to be applied to the contents. This was a popular practice among postcard collectors at the beginning of the Twentieth Century.



POSTMARK TYPE: E1
PERIOD OF USE: 1915



POSTAL MARKINGS
ANNAM DIRECTION 11 DEC 15

AN-KHE
ANNAM

The post office at Cho-Don was transferred to An-Khe on 12 May 1923. The only postmark that employed the hyphenated spelling was a type G device.



POSTMARK TYPE: G
PERIOD OF USE: 1923-43



POSTAL MARKINGS

AN-KHE ANNAM 12-8 26

REVERSE

BINH-DINH ANNAM 13 AOUT 26

TOURANE ANNAM 13-8 26

HANOI TONKIN 17-8 26

ANKHE
ANNAM

Use of the type G "ANKHE" postmark overlapped the use of the hyphenated "ANKHE" type G postmark



POSTMARK TYPE: G
PERIOD OF USE: 1927-39



POSTAL MARKINGS

ANKHE ANNAM 25-5 39

REVERSE

QUINHON ANNAM 25-5 39

SAIGON-CENTRAL COCHINCHINE 26 MAI 39

MARSEILLE-GARE-AVION BÔCHES DU RHONE 9 • VI 1939

PARIS VII RUE CLER 12 • VI 1939

BA-DON ANNAM

Although Ba-Don's post office was open for 25 years from 1921 through 1946, the only known postmark for Ba-Don was a type G device.



POSTMARK TYPE: G
PERIOD OF USE: 1922-40



POSTAL MARKINGS

BA-DON ANNAM 12-12-27
plain R with manuscript registration number

REVERSE

TOURANE ANNAM 14-12-27
ST ETIENNE R.P. LOIRE 14-1-28

BAI-KA
ANNAM

The only postmark used by the Bai-Ka post office was a type E1 device. The post office closed on 12 December 1906.



POSTMARK TYPE: E1
PERIOD OF USE: 1901-06



POSTAL MARKINGS

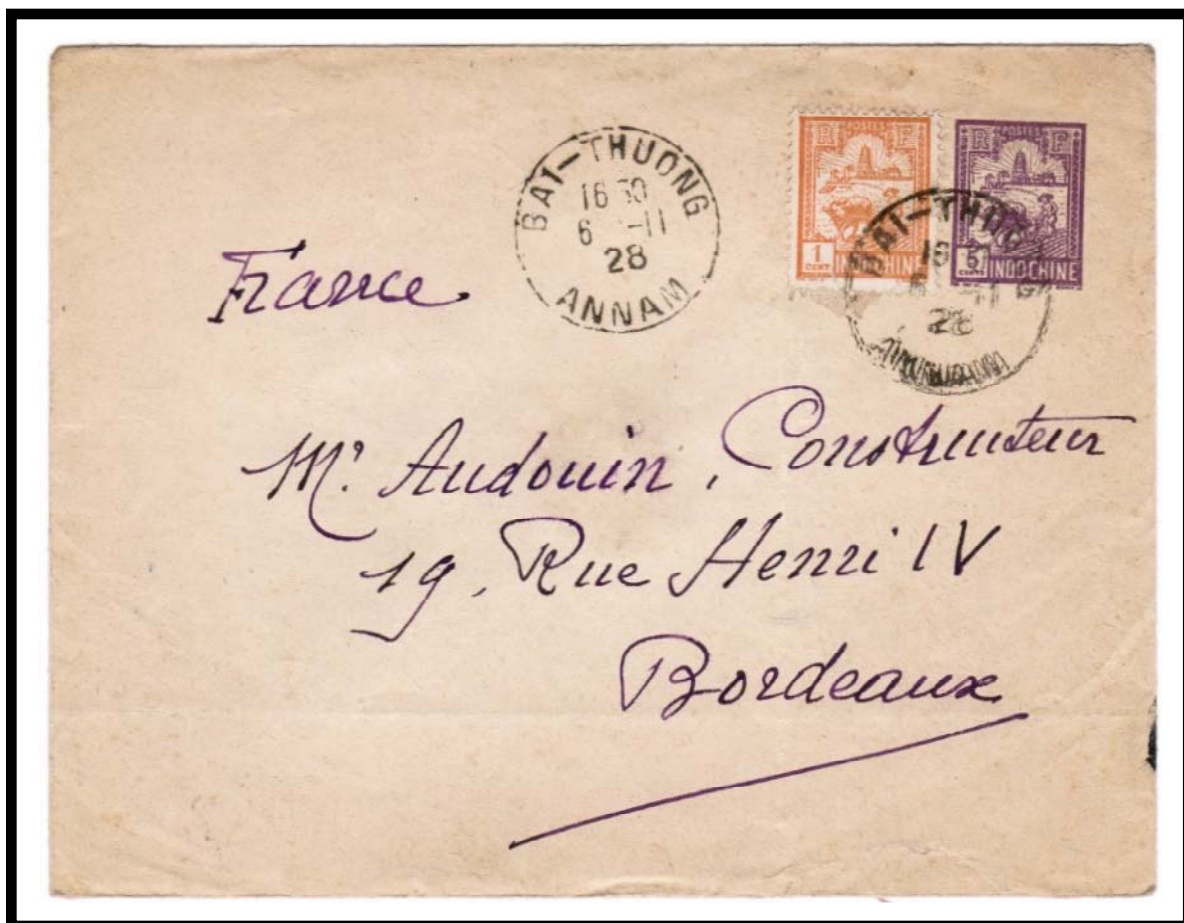
BAI-KA ANNAM 3 NOV 04
TOURANE ANNAM 3 NOV 04
SAIGON-CENTRAL COCHINCHINE 8 NOV 04
TOULON SUR ALLIER ALLIER 5 DEC 04

BAI-THUONG
ANNAM

The only postmark that employed the hyphenated "BAI-THUONG" spelling was a type G device.



POSTMARK TYPE: G
PERIOD OF USE: 1929-36



POSTAL MARKINGS
BAI-THUONG ANNAM 6-11 28
REVERSE
THANH-HOA ANNAM 7-11 28

BA-NA
ANNAM

Located in Annam's highlands region, Ba-Na served as a retreat area. Only a single postmark, a type G device, is known from Ba-Na.



POSTMARK TYPE: G
PERIOD OF USE: 1937-38



POSTAL MARKINGS
BA-NA ANNAM 13-7 38
REVERSE
TOURANE ANNAM 14-7 38
SAIGON-CENTRAL COCHINCHINE 16-7 38

BANGHOI ANNAM

Opening in 1903 as a principal post office, Banghoi's first postmark was a type E2 device.



POSTMARK TYPE: E2
PERIOD OF USE: 1905-17



POSTAL MARKINGS

BANGHOI ANNAM 4 SEPT 07
PHANRANG ANNAM 5 SEPT 07
BEAUCOURT HAUT RHIN - BELFORT 7 OCT 07

BANGHOI
ANNAM

Banghoi's type G1 postmark made two appearances. This example from 1947 is the earliest known cover from the second appearance.



POSTMARK TYPE: G1
PERIOD OF USE: 1924, 47-48



POSTAL MARKINGS
BANGHOI ANNAM 28-8 47
REVERSE
SAIGON R.P. COCHINCHINE 2-9 47

BANGHOI
ANNAM

Banghoi's type G postmark appeared later than the type G1 postmark. It was first put into service in 1939.



POSTMARK TYPE: G
PERIOD OF USE: 1939-44



POSTAL MARKINGS

BANG-HOI ANNAM 20-12 39

REVERSE

NHATRANG ANNAM 20-12 39

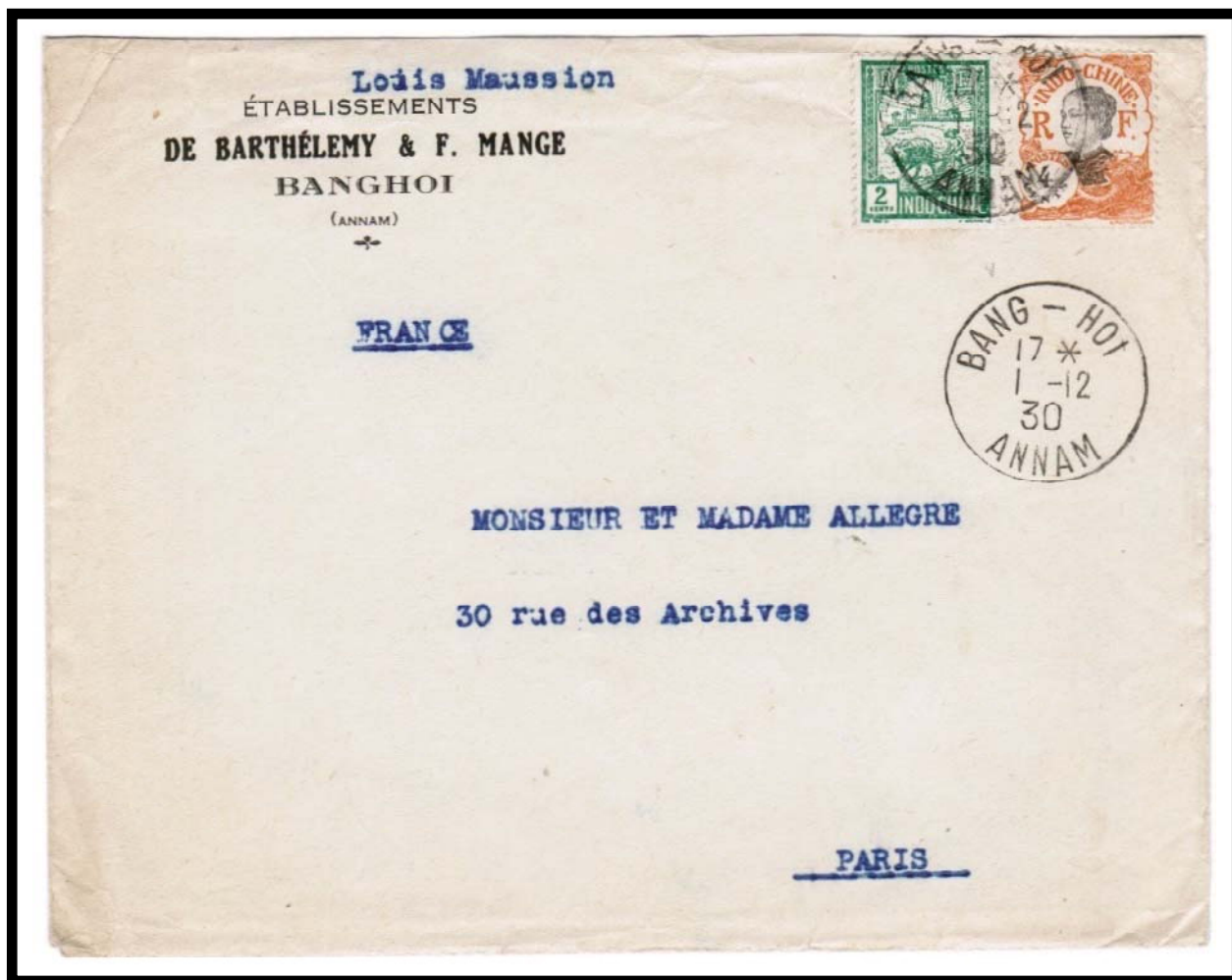
SAIGON-CENTRAL COCHINCHINE 21-12 36

BANG-HOI
ANNAM

The only postmark style that employed a hyphen in the spelling of "BANG-HOI" was a type G format.



POSTMARK TYPE: G
PERIOD OF USE: 1929-43



POSTAL MARKINGS
BANG-HOI ANNAM 1-12 30

BAN-ME-THUOT
ANNAM

The hyphenated spelling, "BAN-ME-THUOT," only appeared in a type G format.



POSTMARK TYPE: G
PERIOD OF USE: 1929-48



POSTAL MARKINGS

BAN-ME-THUOT ANNAM 24-8 32

airmail label

registration label

framed Saigon-Marseille route marking

REVERSE

NINH-HOA ANNAM 25-8 32

SAIGON-CENTRAL COCHINCHINE 26-8 32

NEUILLY SUR SEINE SEINE -9 32

BANME THUOT
ANNAM

The first spelling for the chief town of Darlac Province was two words "BANME" and "THUOT." Opening in 1912, the post office used the E1 postmark until 1925.



POSTMARK TYPE: E1
PERIOD OF USE: 1914-25



POSTAL MARKINGS
BANME THUOT ANNAM 8 NOV 23
REVERSE
NINH HOA ANNAM 11-11 23
QUINHONE ANNAM 14-11 23

BANMETHUOT ANNAM

Introduced during World War II, Banmethuot's type G1 postmark is last known used in 1948.



POSTMARK TYPE: G1
PERIOD OF USE: 1943-48



POSTAL MARKINGS
BANMETHUOT ANNAM 31-7-48

BANMETHUOT PLATEAUX INDOCHINOIS

Before transitioning to the "VIET-NAM" postmarks, Banmethuot used a "PLATEAUX-INDOCHINOIS" postmark. The earliest known use is from 1948.



POSTMARK TYPE: V2(t)
PERIOD OF USE: 1948-51



POSTAL MARKINGS
BANMETHUOT PLATEAUX INDOCHINOIS 6-11 48

BANMETHUOT VIETNAM PLATEAUX INDOCHINOIS

The rarely used type V3 postmark resulted in crowd lettering for "BANMETHUOT-VIETNAM PLATEAUX INDOCHINOIS." Banmethuot's type V3 postmark is only recorded for the year 1951.



POSTMARK TYPE: V3
PERIOD OF USE: 1951



POSTAL MARKINGS

BANMETHUOT VIETNAM PLATEAUX INDOCHINOIS 2-8 1951

plain T

PARIS VIII DISTRIBUTION 8-8 1951

BENTHUY
ANNAM

Benthuy's E1(ch) postmark was one of two that employed the non-hyphenated "BENTHUY" spelling. The last year of use for this postmark was 1925.



POSTMARK TYPE: E1(ch)
PERIOD OF USE: 1913-25



POSTAL MARKINGS

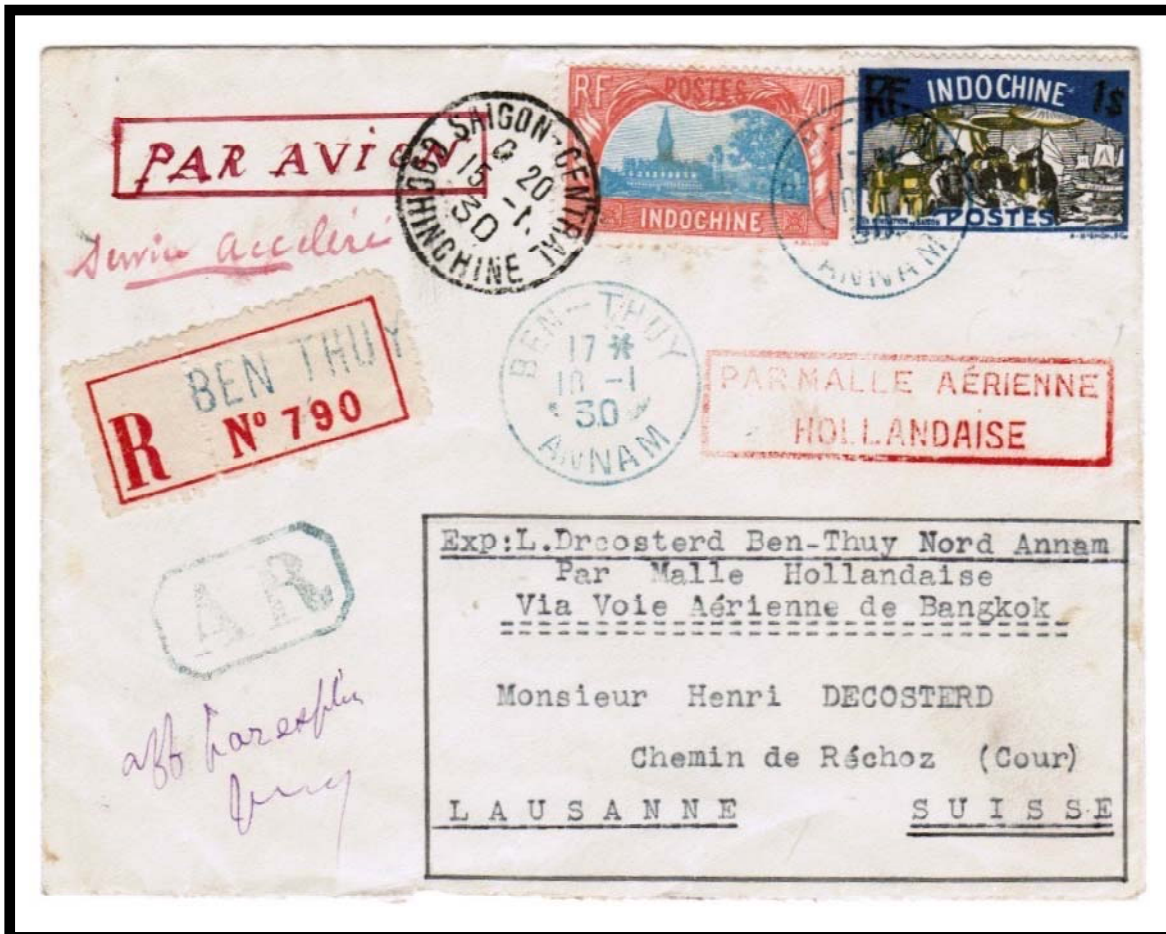
BENTHUY ANNAM 17-6 25
framed R with manuscript registration number

BEN-THUY
ANNAM

The only postmark that employed the hyphenated "BEN-THUY" spelling was a type G device struck here in blue several days before the connection through Saigon with the Dutch airmail service to Europe.



POSTMARK TYPE: G
PERIOD OF USE: 1927-44



POSTAL MARKINGS

BEN-THUY TONKIN 10-1 30 (blue)
SAIGON-CENTRAL COCHINCHINE 15-1 30
registration label and framed AR (blue)
framed PAR MALLE AÉRIENNE HOLLANDAISE handstamp

REVERSE

SAIGON-CENTRAL COCHINCHINE 13-1 30
LAUSANNE 11 GARE 25.1.30

BINH-DINH
ANNAM

Sent in 1926, the final year of the E2 style postmark, the address on this envelope mistakenly locates Hanoi in Annam rather than Tonkin.



POSTMARK TYPE: E2
PERIOD OF USE: 1903-26



POSTAL MARKINGS
BINH-DINH ANNAM 3 NOV 26
REVERSE
HANOI TONKIN 7-11 26

BINH-DINH ANNAM

In service since 1925, the last year of use of the hyphenated "BINH-DINH" type G postmark was 1932.



POSTMARK TYPE: G
PERIOD OF USE: 1925-32



POSTAL MARKINGS

BINH-DINH ANNAM 4-11 32

REVERSE

QUI-NHON ANNAM 4-11 32

SAIGON-CENTRAL COCHINCHINE 7-11 32

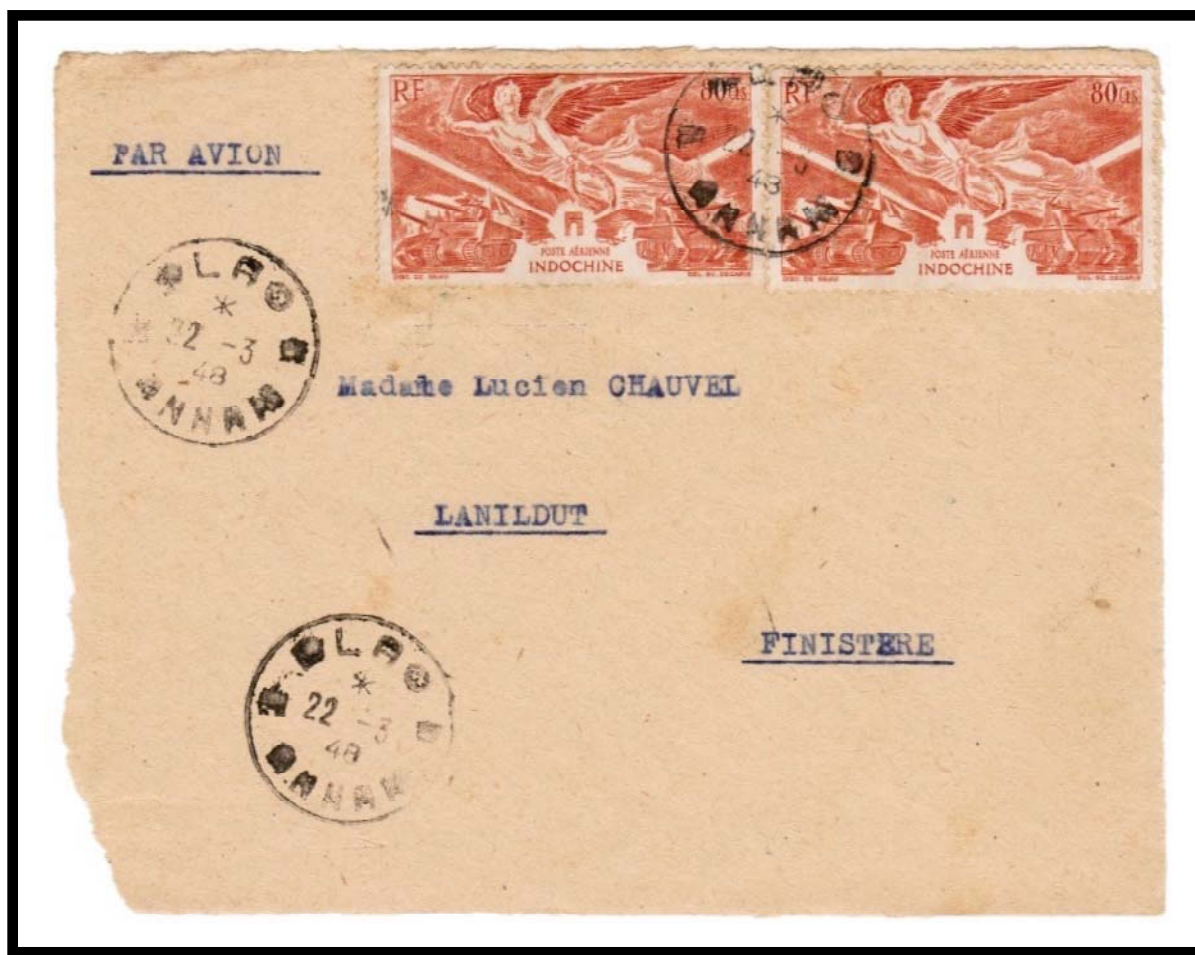
PARIS XX DISTRIBUTION 3 • XII 1932

BLAO ANNAM

As one of Indochina's later post offices, the post office at Blao opened around 1938. Later, the name of the town changed from Blao to Bao-Loc. Blao's type G1 postmark entered service in 1942 and its latest known use is 1948.



POSTMARK TYPE: G1
PERIOD OF USE: 1942-48



POSTAL MARKINGS
BLAO ANNAM 22-3 48

BLAO ANNAM

Blaos type W2 postmark with “Viet-Nam” replacing “ANNAM” appeared in 1952, shortly before Indochina’s postage stamps were demonetized.



POSTMARK TYPE: W2
PERIOD OF USE: 1952-modern



POSTAL MARKINGS
BLAO VIET-NAM 3-2 1952

BONGSON
ANNAM

The first postmark with the "BONGSON" spelling was a type E1 device. The final year of its use was 1924.



POSTMARK TYPE: E1
PERIOD OF USE: 1903-24



POSTAL MARKINGS

BONGSON ANNAM 7 JUL 24
framed R with manuscript registration number

REVERSE

QUINHONEI ANNAM 8-7 24
ST ETIENNE R.P. LOIRE 7-8 24

BONG-SON
ANNAM

The hyphenated "BONG-SON" spelling reappeared in 1928 in the form of a type G device. It remained in service for a decade and a half.



POSTMARK TYPE: G
PERIOD OF USE: 1928-30



POSTAL MARKINGS

BONG-SON ANNAM 14-12 33

REVERSE

QUI-NHON ANNAM 14-12 33

SAIGON-CENTRAL COCHINCHINE 16-12 33

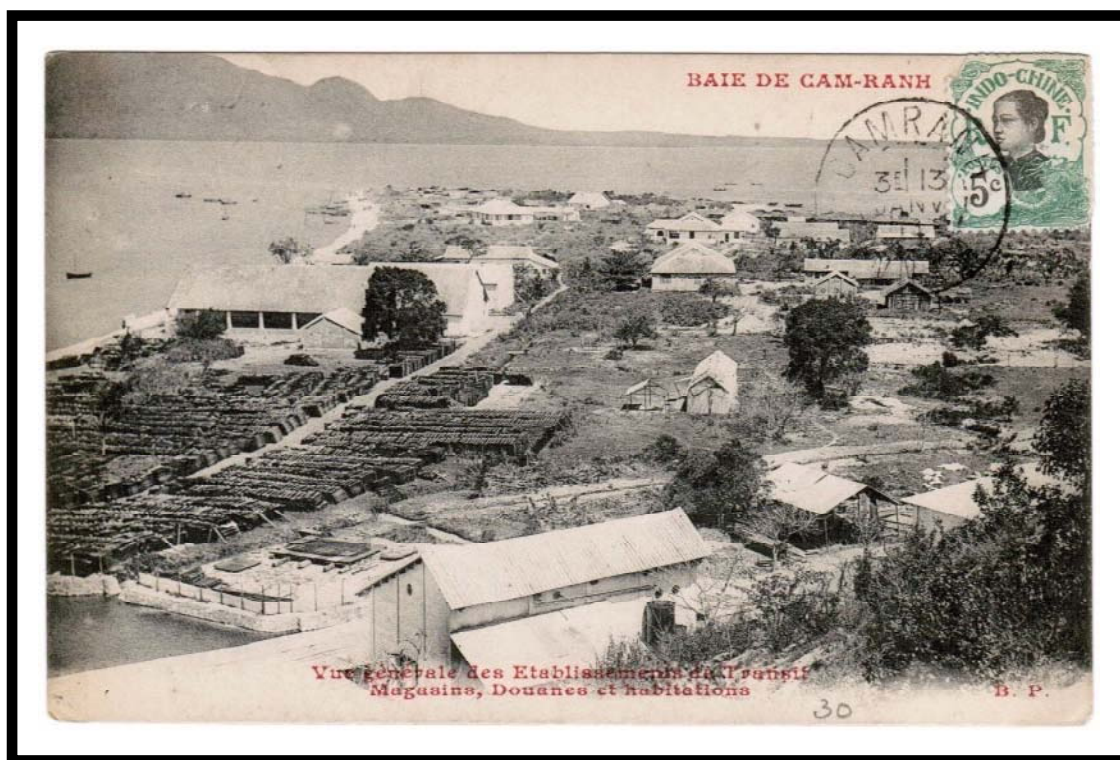
BOULGNE-BILLANCOURT-CENTRE SEINE 13 • I 1934

CAMRANH ANNAM

Camranh Bay became famous as a major military base for American forces during the Vietnam conflict. Its first postmark was a type E2 device whose last year of recorded use was 1914.



POSTMARK TYPE: E2
PERIOD OF USE: 1909-14



POSTAL MARKINGS
CAMRANH ANNAM 13 JANV 14

CANA
ANNAM

Only a single postmark, format G1, is known from the secondary post office at Cana. Here the date plug is rotated 90 degrees from its normal position.



POSTMARK TYPE: G1
PERIOD OF USE: 1932-43



POSTAL MARKINGS

CANA ANNAM 23-2 35
airmail label

REVERSE

SAIGON-CENTRAL COCHINCHINE 23-2 35
PONDICHERY 1 MAR. 35

CAUHAI
ANNAM

Cuahai's short-lived type E1 postmark was the only one to use the non-hyphenated spelling. The Cauhai post office was transferred to Thauluu effective 1 August 1907.



POSTMARK TYPE: E1
PERIOD OF USE: 1904-05



POSTAL MARKINGS
CAUHAI ANNAM 21 AOUT 04
HUE ANNAM 22 AOUT 04

CHO-DON
ANNAM

Only a single postmark format, type E2, is known from Cho-Don. The post office opened in 1908 but was transferred to Ankhe effective 12 May 1923.



POSTMARK TYPE: E2
PERIOD OF USE: 1911-23



POSTAL MARKINGS

CHO-DON ANNAM 17 NOV 11

REVERSE

BINH-DINH ANNAM 18 NOV 11

QUINHONE ANNAM 18 NOV. 11

PARIS 9 DISTRIBUTION 19-12 11

CHU-LE
ANNAM

The post office at Chu-Le opened on 1 September 1928. The only postmark layout recorded for Chu-Le was in the type G format.



POSTMARK TYPE: G
PERIOD OF USE: 1929-42



POSTAL MARKINGS
CHU-LE ANNAM 27-10 38
REVERSE
VINH ANNAM 27-10 38
PARIS VII RUE CLER 5 • XI 1938

CUA-LO
ANNAM

Formerly part of the rural post system, the Cua-Lo post office was established on 13 May 1925. The only known postmark from this town is the type G device, which remained in service for two decades.



POSTMARK TYPE: G
PERIOD OF USE: 1925-44



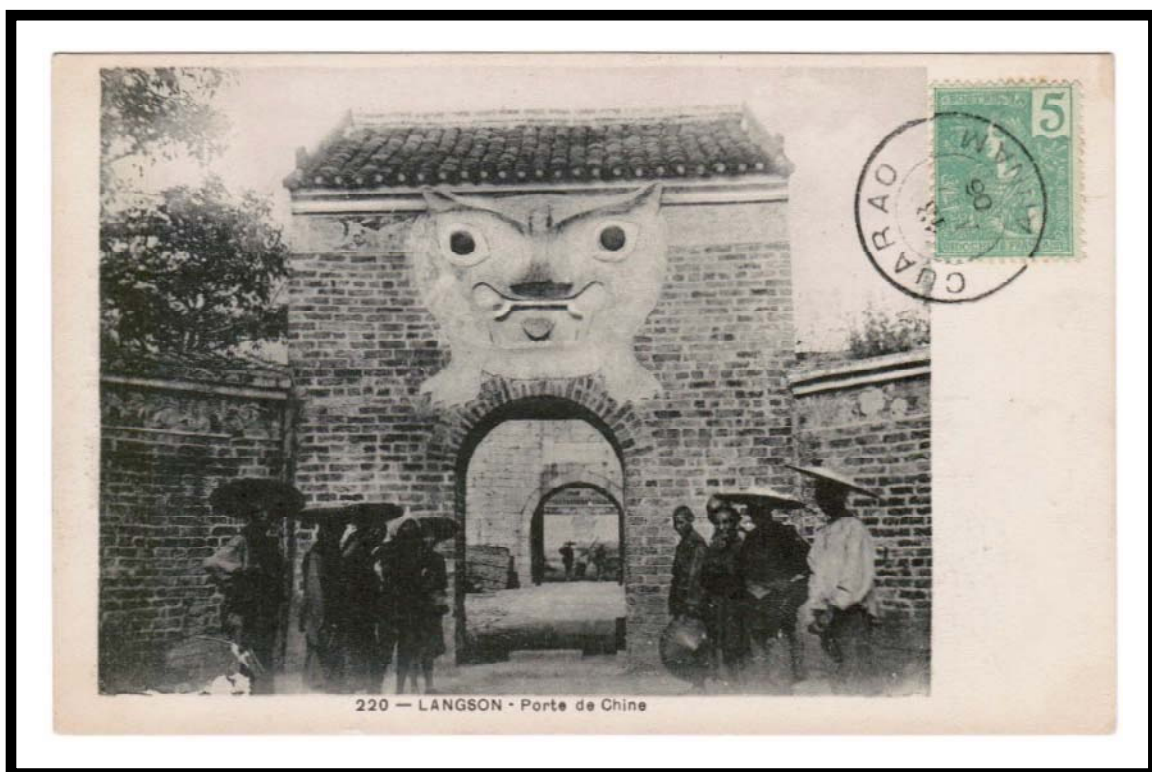
POSTAL MARKINGS
CUA-LO ANNAM 26-7 38
REVERSE
VINH ANNAM 26-7 38
SAIGON-CENTRAL COCHINCHINE 28 JUIL 38

CUARAO ANNAM

The only postmark that ever used the unhyphenated "CUARAO" spelling was a type E1 device. In service for nearly a quarter of a century, this example is the earliest known use from 1906.



POSTMARK TYPE: E1
PERIOD OF USE: 1906-29



POSTAL MARKINGS
CUARAO ANNAM 13 MAI 06

CUARAO
ANNAM

The only postmark that ever used the non-hyphenated "CUARAO" spelling was a type E1 device. The postmark remained in service for nearly a quarter of a century.



make E1 ?

POSTMARK TYPE: E1
PERIOD OF USE: 1907-29



POSTAL MARKINGS

CUARAO ANNAM 19 FEVR 23
REVERSE

HANH-HOA ANNAM 23-2 24
VINH ANNAM 25 FEVR 24
HANOI TONKIN 24-2 24

CUA-RAO
ANNAM

The only postmark that employed the hyphenated "CUA-RAO" was a type G format.



POSTMARK TYPE: G
PERIOD OF USE: 1934-45



POSTAL MARKINGS

CUA-RAO ANNAM 6-6 35
framed Hanoi-Marseille route marking

REVERSE

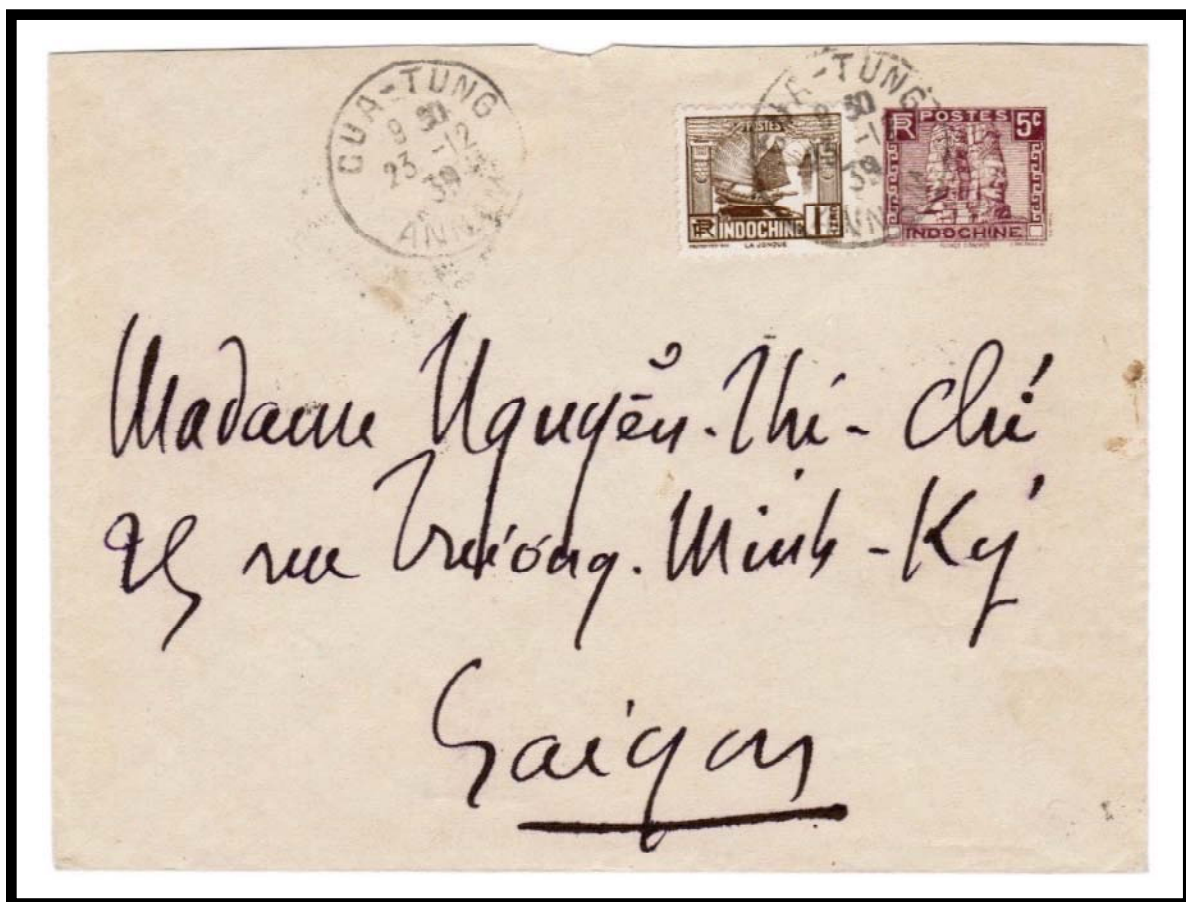
VINH ANNAM 8-6 35
HANOI R.P. TONKIN 10 JUIN 35
PARIS R.P. AVION 23 • VI 1935

CUA-TUNG
ANNAM

Cua-Tung was a principal post office in Nghe-An Province. The post office operated from 6 November 1922 until 1946.



POSTMARK TYPE: G
PERIOD OF USE: 1923-44



POSTAL MARKINGS
CUA-TUNG ANNAM 23-12 39
REVERSE
HUE ANNAM 24-12 39
SAIGON-CENTRAL COCHINCHINE 26-12 39

CUNG SON ANNAM

Only a single postmark, a type E1 device, is known from the Cung Son post office, which opened around 1901. This example from 1905 is the earliest known use of Cung Son's type E1 postmark.



POSTMARK TYPE: E1
PERIOD OF USE: 1905-26



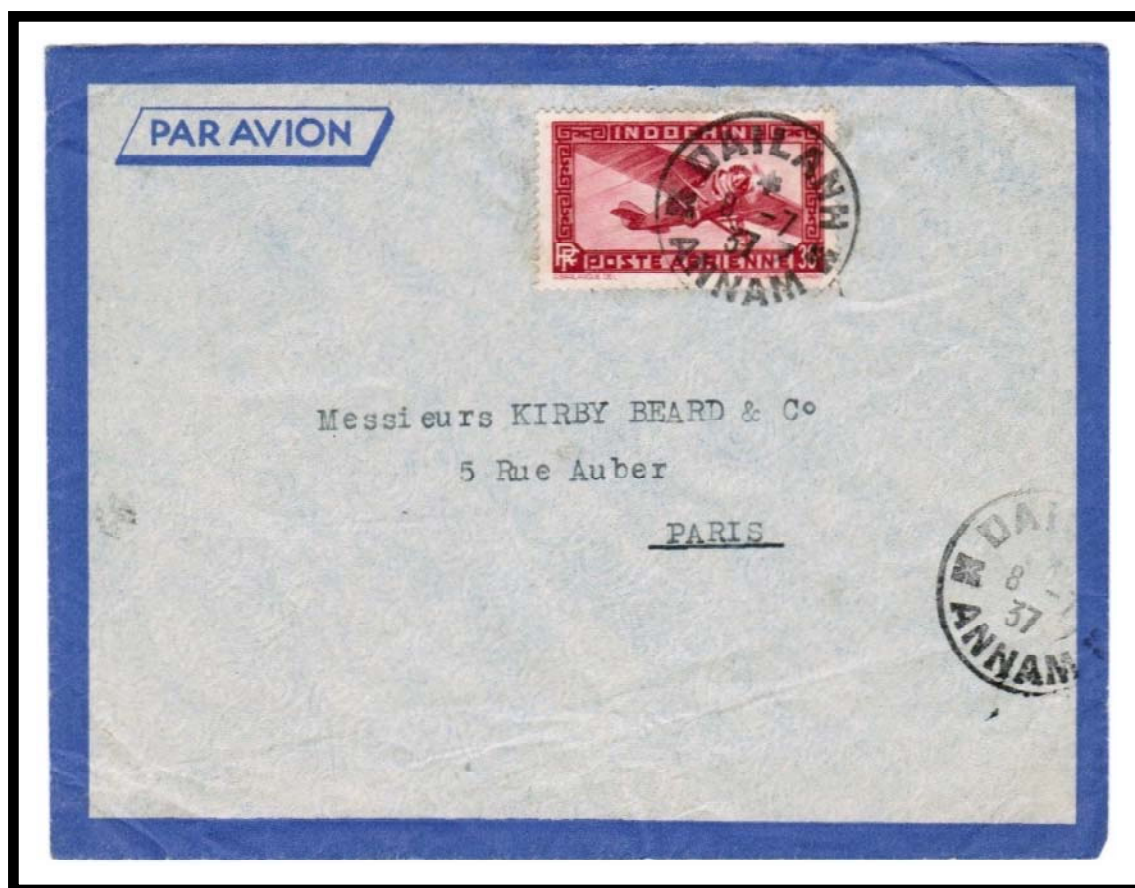
POSTAL MARKINGS
CUNG SON ANNAM 3 FEVR. 05

DAILANH
ANNAM

The Dailanh post office operated for a period of just over 4 years from 6 February 1934 through 1 April 1938. Its only postmark was a type G1 device



POSTMARK TYPE: G1
PERIOD OF USE: 1934-38



POSTAL MARKINGS
DAILANH ANNAM 8-7 37
REVERSE
PARIS IX RUE HIPPOLYTE LEBAS 7 • VII 1937

DALAT ANNAM

The Dalat post office opened on 1 January 1901. Its first postmark was a type E1 device that was in service for almost a decade.



POSTMARK TYPE: E1
PERIOD OF USE: 1901-09



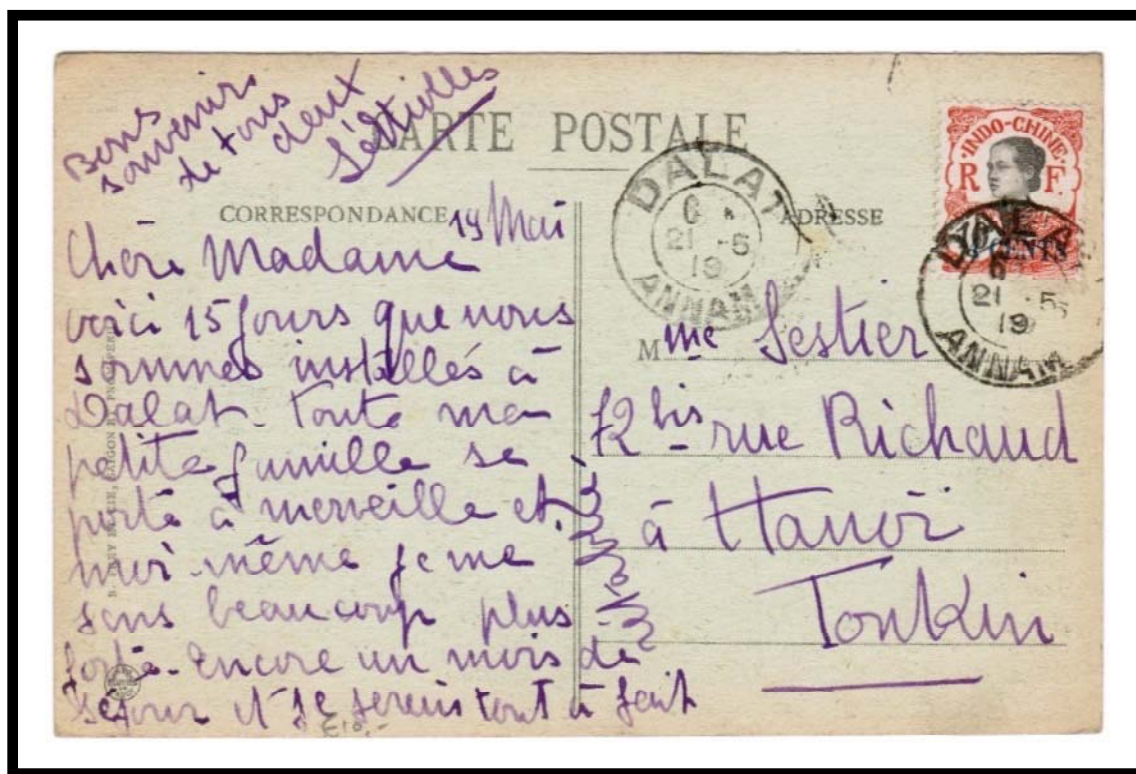
POSTAL MARKINGS
DALAT ANNAM 20 SEPT 07
PHANRANG ANNAM 21 SEPT 07

DALAT ANNAM

Dalat's type E1(ch) postmark appeared during World War I and remained in service for seven years until it was replaced by the type E2(ch) postmark.



POSTMARK TYPE: E1(ch)
PERIOD OF USE: 1916-23



POSTAL MARKINGS
DALAT ANNAM 21-5 19

DALAT
ANNAM

Dalat's type E2 postmark always used a numerical designation for the month of mailing.



POSTMARK TYPE: E2(ch)
PERIOD OF USE: 1922-26



POSTAL MARKINGS
DALAT ANNAM 9-1 24
REVERSE
HANOI TONKIN 15-1 24

DALAT
ANNAM

In use for over two decades, the final year for Dalat's type G postmark was 1947.



POSTMARK TYPE: G
PERIOD OF USE: 1927-47



POSTAL MARKINGS
DALAT ANNAM 24-10 47
REVERSE
SAIGON R.P. COCHINCHINE 28-10 47

DALAT
ANNAM

Dalat's type G1 postmark was applied to stationery from the Langbian Palace Hotel in 1929. At the extreme upper left is the abbreviation "S.G.H.I.," which stands for "Société des Grands Hotels Indochinois."



POSTMARK TYPE: G1
PERIOD OF USE: 1922-48



POSTAL MARKINGS
DALAT ANNAM 19-4 29
REVERSE
SAIGON-CENTRAL COCHINCHINE 26-4 29

DALAT
ANNAM

The final year for Dalat's type G1 postmark was 1948. The first year for this postmark format was 1922, over twenty years earlier.



POSTMARK TYPE: G1
PERIOD OF USE: 1922-48



POSTAL MARKINGS
DALAT ANNAM 18-2 48
REVERSE
SAIGON R.P. COCHINCHINE 25-2 48
HONG KONG 15 MR 48

DALAT PLATEAUX INDOCHINOIS

After World War II, Dalat began using postmarks that identified it as being located on the "PLATEAUX INDOCHINOIS."



POSTMARK TYPE: V2
PERIOD OF USE: 1948-51



POSTAL MARKINGS
DALAT PLATEAUX INDOCHINOIS 14-3 1951
REVERSE
DALAT PLATEAUX INDOCHINOIS 14-3 1951

DALAT VIET-NAM
PLATEAUX INDOCHINOIS

In 1951, a unique postmark appeared for Dalat that included both "VIETNAM" and "PLATEAUX INDOCHINOIS."



POSTMARK TYPE: V3
PERIOD OF USE: 1951



POSTAL MARKINGS
DALAT VIET-NAM PLATEAUX INDOCHINOIS 18-8 1951

DALAT
VIET-NAM

One of the last postmarks for Dalat simply identified the city as being located in Viet Nam.



POSTMARK TYPE: W2(t)
PERIOD OF USE: 1951-52



POSTAL MARKINGS
DALAT VIET-NAM 16-11 1951

DJIRING ANNAM

Opening on 15 March 1900, the Djiring post office's first postmark was a type E2 device. The type E2 postmark remained in service for over a quarter century until replaced by type G postmarks.



POSTMARK TYPE: E2
PERIOD OF USE: 1902-29



POSTAL MARKINGS
DJIRING ANNAM 14 DEC 12

DJIRING
ANNAM

Djiring was the chief town of Haut Donnai Province. The type G1 postmark used "X" outlines as separators in the outer ring of words.



POSTMARK TYPE: G1
PERIOD OF USE: 1930-48



POSTAL MARKINGS
DJIRING ANNAM 8-3 35
REVERSE
SAIGON-CENTRAL COCHINCHINE 10 MARS 35

DJIRING PLATEAUX INDOCHINOIS

The earliest known use of Djiring's type V2(t) postmark is 1949. The type V2(t) postmark was in service for only three years.



add dash

POSTMARK TYPE: V2(t)
PERIOD OF USE: 1949-51



POSTAL MARKINGS
DJIRING PLATEAUX INDOCHINOIS 4-6 1949
REVERSE
SAIGON R.P. COCHINCHINE 7-6 1949

DO-LUONG
ANNAM

Transferred from Phu-Dien on 2 May 1919, the Do-Luong post office remained in operation until 1946.



POSTMARK TYPE: G
PERIOD OF USE: 1923-44



POSTAL MARKINGS
DO-LUONG ANNAM 15-8 26
REVERSE
VINH ANNAM 16-8 26
HANOI TONKIN 17-8 26

DOLUONG
ANNAM

The only postmark that employed the non-hyphenated spelling, "DOLUONG," was in a type G format. The last reported year of use was 1940.



POSTMARK TYPE: G
PERIOD OF USE: 1935-40



POSTAL MARKINGS
DULUONG ANNAM 20-6 40
REVERSE
VINH ANNAM 20-6 40

DONG-HOI
ANNAM

Dong-Hoi's type E2 postmark was in service for nearly a quarter century.



POSTMARK TYPE: E2
PERIOD OF USE: 1898-1921



POSTAL MARKINGS
DONG-HOI ANNAM 3 AOUT 11
REVERSE
VINH ANNAM 3 AOUT 11
HANOI TONKIN 5 AOUT 11

DONGHOI
ANNAM

The type E2(ch) postmark was the first that dropped the hyphen in its "DONGHOI" spelling.



POSTMARK TYPE: E2(ch)
PERIOD OF USE: 1919-28



POSTAL MARKINGS
DONGHOI ANNAM 4-3 26

DONG-HOI ANNAM

Dong-Hoi's type G postmark stayed in service through World War II. After the war, the hyphenated spelling was dropped and "DONGHOI" appeared on all later postmarks.



POSTMARK TYPE: G
PERIOD OF USE: 1923-45



POSTAL MARKINGS

DONG-HOI ANNAM 4-10 32
registration and airmail labels
Saigon-Marseille route marking

REVERSE

TOURANE ANNAM 5-10 32
SAIGON-CENTRAL COCHINCHINE 7-10 32

DONG HOI
ANNAM

The only postmark that employed a space between "DONG" and "HOI" was a type G1 device. The postmark was in service for five years.



POSTMARK TYPE: G1
PERIOD OF USE: 1924-29



POSTAL MARKINGS

DONG HOI ANNAM 2-7 25
framed R with manuscript registration number

REVERSE

TOURANE ANNAM 3-7 25
ELBEUF SEINE INFERIEURE 9-8 25

DONG-HOI
CENTRE VIET-NAM

In 1950-51, Donghoi's postmark located the town in "CENTRE VIET-NAM," the provisional substitute name for "ANNAM."



POSTMARK TYPE: V1(t)
PERIOD OF USE: 1950-51



POSTAL MARKINGS

DONG-HOI CENTRE VIET-NAM 21-8 1950

REVERSE

TOURANE CENTRE VIET-NAM 22-8 1950
DALAT PLATEAUX INDOCHINOIS 24-8 1950

ENTREPOT DES DESPECHES DE DONGHA ANNAM

Only a very few post offices had the “ENTREPOT DES DESPECHES DE...” postmarks. At Dongha, this postmark preceded its establishment as a principal post office on 16 April 1939.



POSTMARK TYPE: G
PERIOD OF USE: 1930-36



POSTAL MARKINGS
ENTREPOT DES DESPECHES DE DONGHA ANNAM 15-9 36

DRAN
ANNAM

Opening in 1900, the Dran post office ultimately became Donduong. Its first postmark was a type E2 device, which was in service for a quarter century.



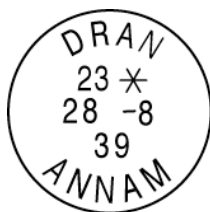
POSTMARK TYPE: E2
PERIOD OF USE: 1902-27



POSTAL MARKINGS
DRAN ANNAM 7 FEVR 26
REVERSE
TOURCHAM ANNAM 7-2 26

DRAN
ANNAM

The code letter "C" in the censor handstamp shows that this mailing was examined upon arrival in Saigon. Annam's code letter for censoring was "B."



POSTMARK TYPE: G
PERIOD OF USE: 1932-43



POSTAL MARKINGS

DRAN ANNAM 28-8 39
censor handstamp

REVERSE

SAIGON-CENTRAL COCHINCHINE 29 AOUT 39
CANTHO COCHINCHINE 2-9 39

DRAN PLATEAUX INDOCHINOIS

The earliest known use of Dran's type V2 postmark is 1949. It remained in service for only a few years until 1951.



POSTMARK TYPE: V2
PERIOD OF USE: 1949-51



POSTAL MARKINGS

DRAN PLATEAUX INDOCHINOIS 11-12 49
registration label

REVERSE

DALAT PLATEAUX INDOCHINOIS 12-12 1949
SAIGON R.P. SUD VIET-NAM 13-12 49
BESANCON DOUBS 16-12 1949

FAIFO
ANNAM

Faifo was the chief town of Quang-Nam Province. Faifo's type D1 postmark was in service for a decade before being replaced by type E2 postmarks.



POSTMARK TYPE: D1
PERIOD OF USE: 1902-12



POSTAL MARKINGS
FAIFO ANNAM 3 DEC. 03
SAIGON-CENTRAL COCHINCHINE 7 DEC 03

FAIFO
ANNAM

Faifo's type E1(ch) postmark was used for almost a decade. The latest reported use of the type E1(ch) postmark was 1924.



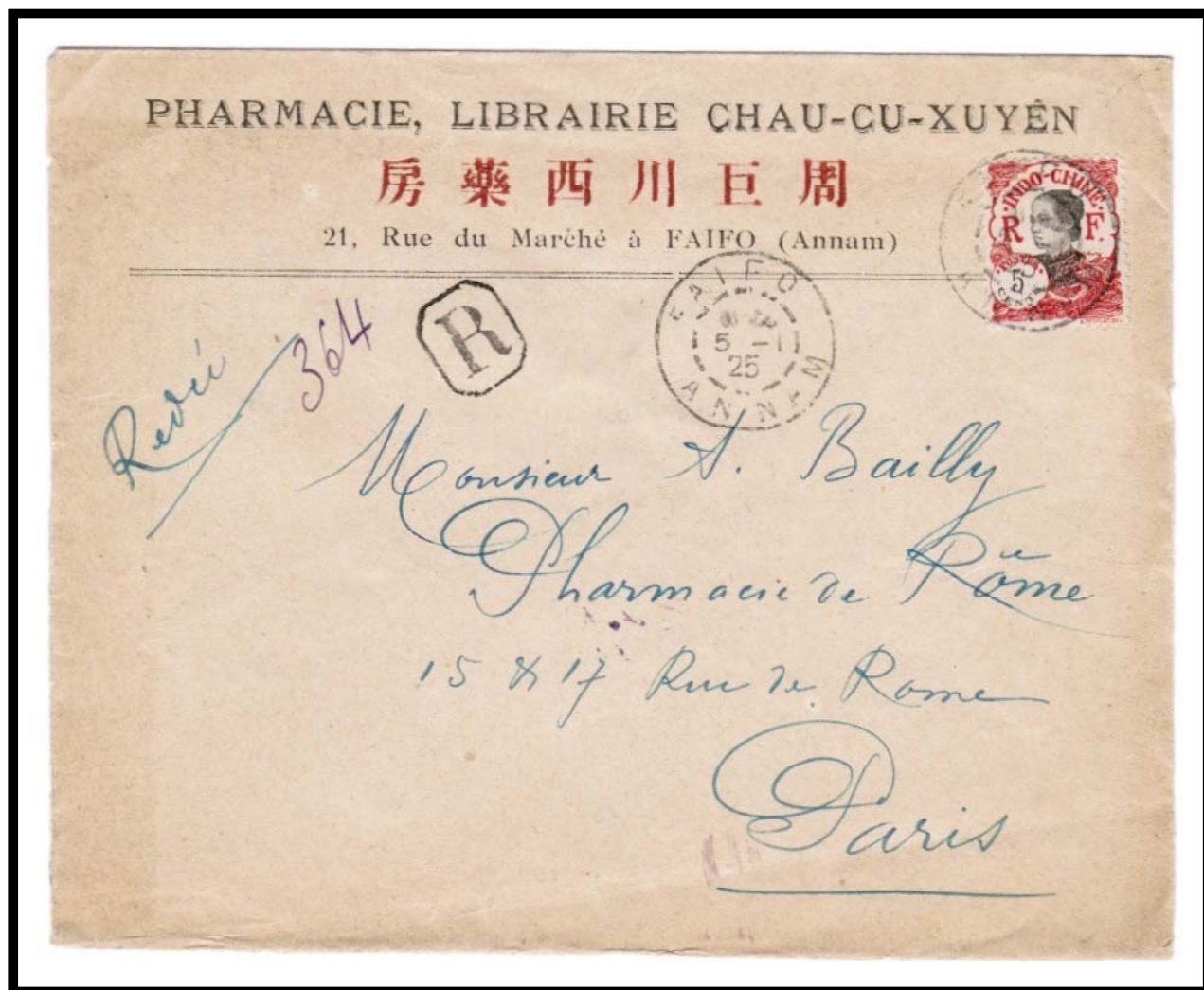
POSTMARK TYPE: E1(ch)
PERIOD OF USE: 1916-24



POSTAL MARKINGS
FAIFO ANNAM 22-1 24
REVERSE
HANOI TONKIN 26-1 24

FAIFO
ANNAM

Faifo's type E2(ch) postmark displaced the type D1 postmark. In service for a decade, the latest reported use of Faifo's type E2(ch) postmark was in 1925.



POSTMARK TYPE: E2(ch)
PERIOD OF USE: 1915-25

POSTAL MARKINGS
FAIFO ANNAM 5-1 25
framed R with manuscript registration number

REVERSE
FAIFO ANNAM 5-1 25
QUINHONE ANNAM 6 (?) 25
YOKOHAMA A MARSEILLE № 4 12-1 25

FAI-FO
ANNAM

Faifo employed a number of spellings in its postmarks. The only postmark that incorporated the hyphenated spelling was a type G device.



POSTMARK TYPE: G
PERIOD OF USE: 1924-46



POSTAL MARKINGS

FAI-FO ANNAM 6-12 34

REVERSE

TOURANE ANNAM 6-12 34

SAIGON-CENTRAL COCHINCHINE 8-12 34

PARIS R.P. DISTRIBUTION 19 • XII 1934

FAIFOO
ANNAM

After World War II, the spelling of "Faifo" changed. Another "o" was added to the end of the word. The first postmark with the new spelling was a type G1 device.



POSTMARK TYPE: G1
PERIOD OF USE: 1948-49



POSTAL MARKINGS
FAIFOO ANNAM 30-8 48
airmail label
REVERSE
TOURANE ANNAM 2-9 48

FAIFOO ANNAM

Faifoo's small diameter (24 millimeter) type G4 postmark is only known to have been used in the year 1949.



POSTMARK TYPE: G4
PERIOD OF USE: 1949



POSTAL MARKINGS
FAIFOO ANNAM 5-11 1949
REVERSE
TOURANE ANNAM 9-11 1949

FAIFOO
CENTRE VIET-NAM

At mid-century, "CENTRE VIET-NAM" replaced "ANNAM" in the postmarks of the French protectorate. At Faifoo, the type V1(t) postmark was in use for three years.



POSTMARK TYPE: V1(t)
PERIOD OF USE: 1949-50



POSTAL MARKINGS

FAIFOO CENTRE VIET-NAM 6-5 1950

REVERSE

FAIFOO CENTRE VIET-NAM 6-5 1950
TOURANE CENTRE VIET-NAM 9-5 1950